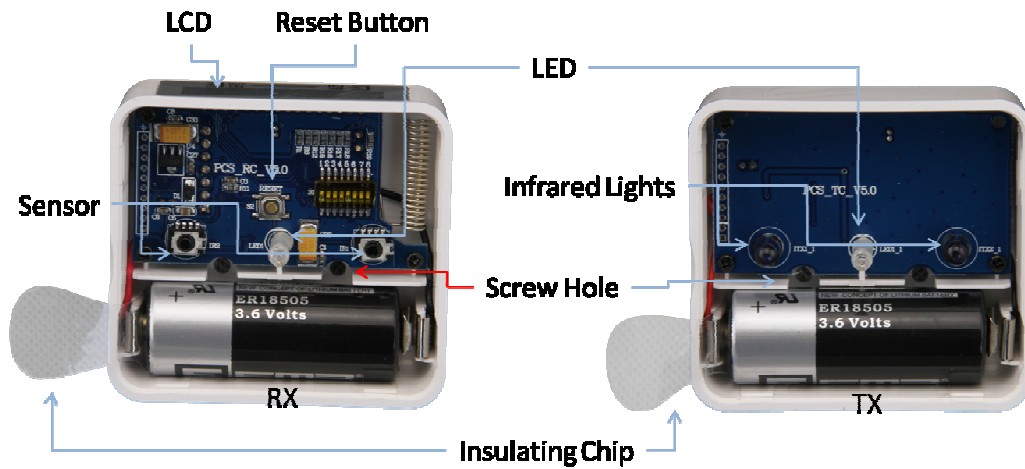
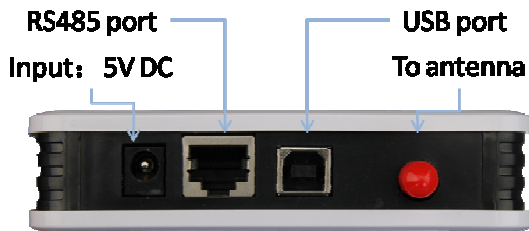


HPC005 Quick Guide

Device introduction



| | | | |
|---|--------------------|---|-----|
| 1 | Sensor (TX-RX) | 1 | set |
| 2 | DC (date receiver) | 1 | pcs |
| 3 | Antenna | 1 | pcs |
| 4 | USB cable | 1 | pcs |
| 5 | Disc | 1 | pcs |
| 6 | Battery | 1 | pcs |
| 7 | Adapter | 1 | pcs |
| 8 | Sticker | 4 | pcs |
| 9 | Screw | 4 | pcs |



Hardware

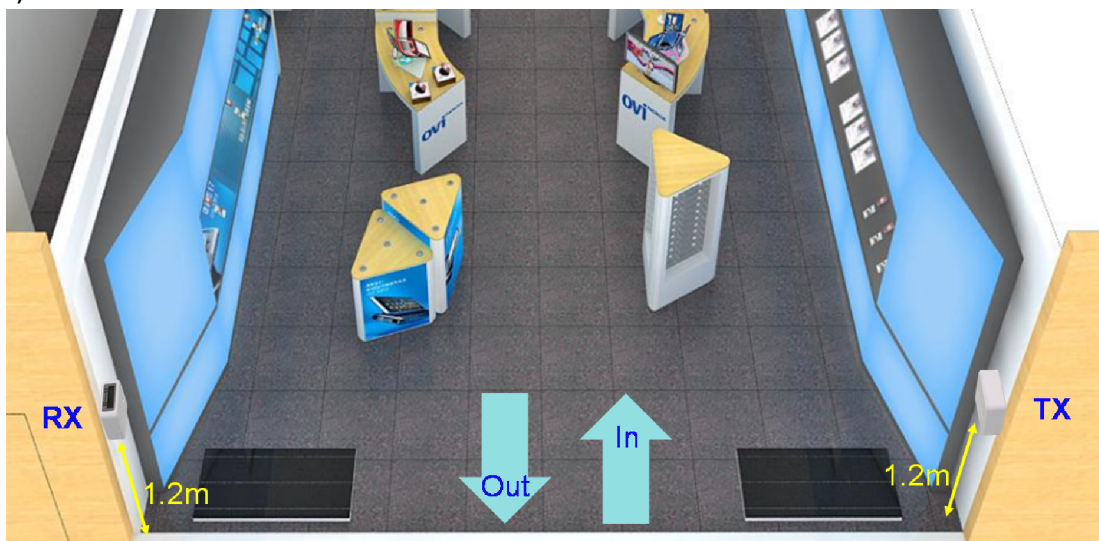
1. Remove the insulating chip → connect the antenna and adaptor →
connect DC to PC



2. Install the TX and RX

Note:

- a) RX and TX should be face to face.
- b) At same height ,1.2-1.4M height
- c) No object between them
- d) Note the in and out direction
- e) The infrared sensor on the RX is not in the sun or the spotlight.
- f) The distance of TX and RX should be within 40M



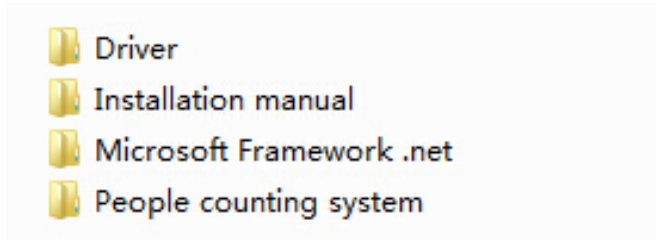
After installation, please test it. When people go through it, the center light of RX will flash red. Now the hardware installation is well done.

Software

1. Install PL2303 driver, People counting system, Framework in order.

Win7/Win 8 — Framework 4.0;

Win XP — Framework 3.0



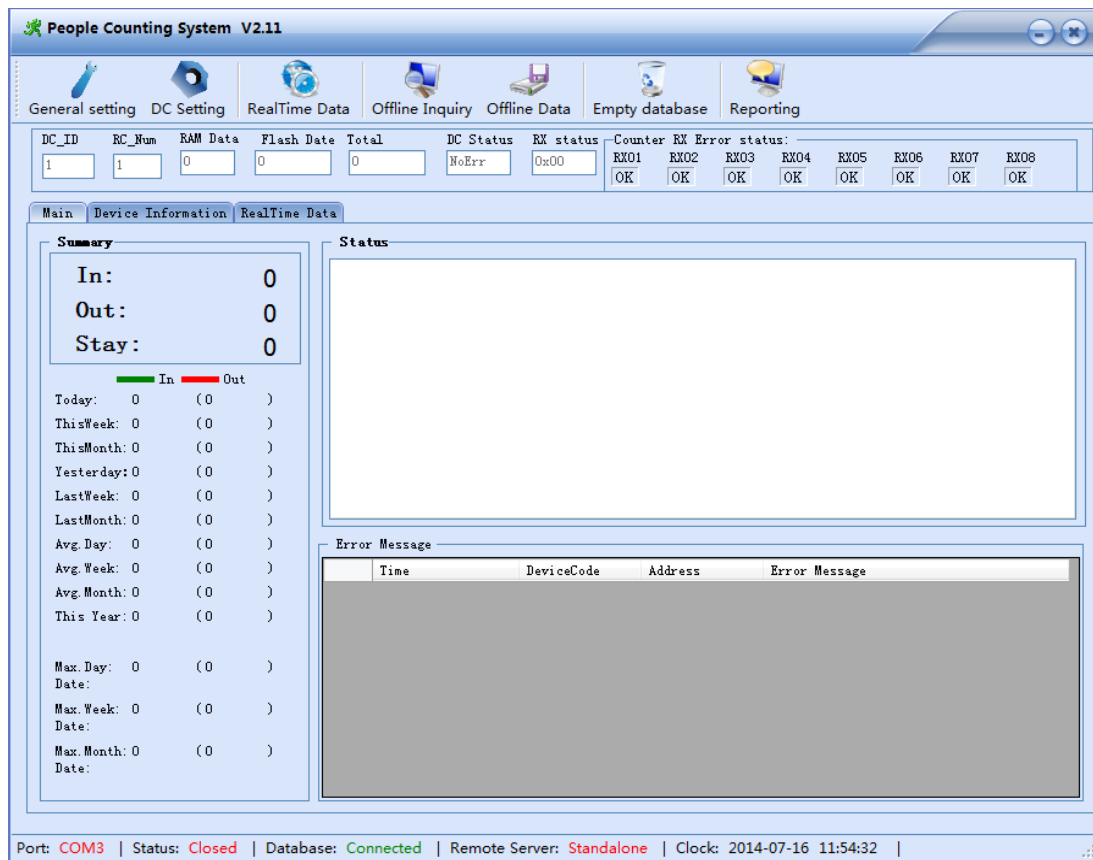
Note:

- a) Driver, Framework and software are all installed.
- b) The software can not be installed under C:\Program Files.

2. Start the software

After installing the software, it drives automatically. Or you could double click the

icon on the desktop.



The date will be shown on IN / OUT/ STAY etc .

The date will be passed from RX to DC every five minutes. So please wait 5 minutes to check the data.